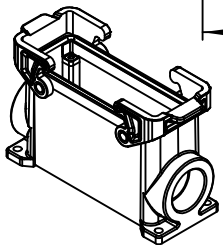
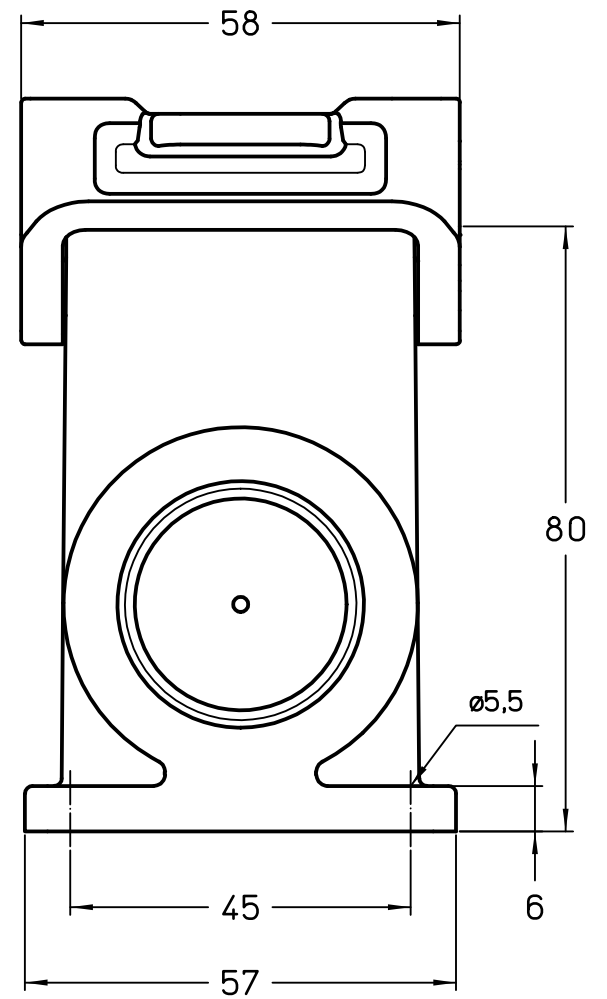
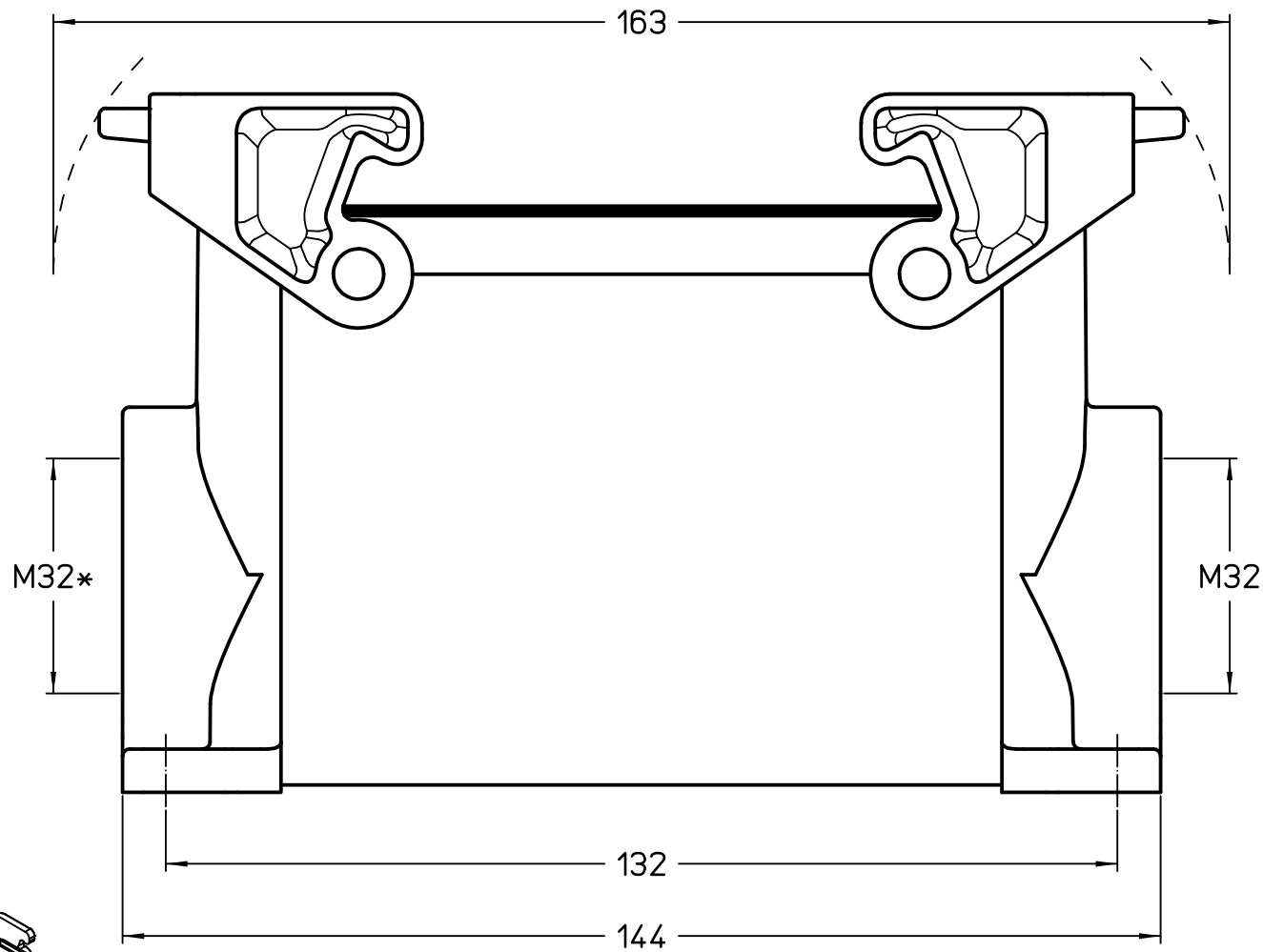



* closed hole



| | |
|---|---------------------|
|  | Dimensions in mm |
| Original Size | A4 |
| Date | 06/11/23 |
| Sign. | G. Renna |

Simplified representation with dimensions without tolerance

TAPW 24.32B
 Insulating surface mounting housing, size "104.27", 1x M32 side entry,
 with 2 levers, with integrated PE jumpers - T-Type/W

Scale
 1:1

